

# Engineering

## Halcrow Engineering

Halcrow Engineering offer global consultancy services for planning, design and development.

Halcrow are working with BT to develop a warren of tunnels beneath Holborn, London. This space is being offered for storage, commercial or leisure use.

We were approached to design and produce a showcase for the development.

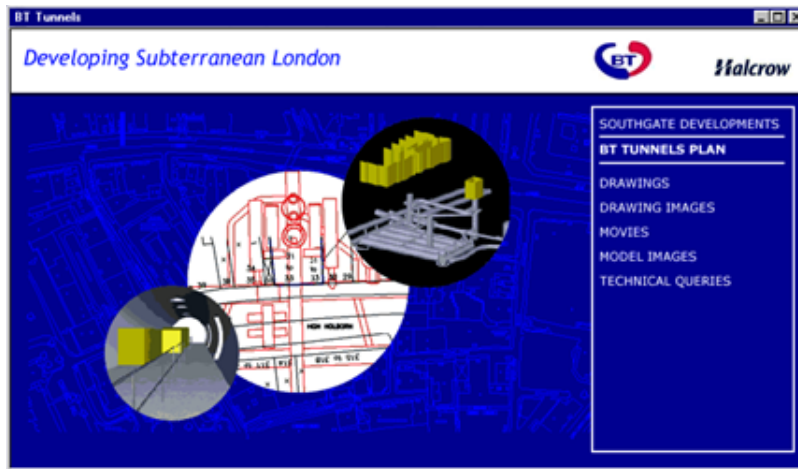
We used Macromedia Flash software to build the CD-ROM . The presentation includes 3D models, plans and walk through movies.

The CD-ROM presents a variety of content in different formats including; Acrobat PDF's, Quicktime Movies and AutoCAD.

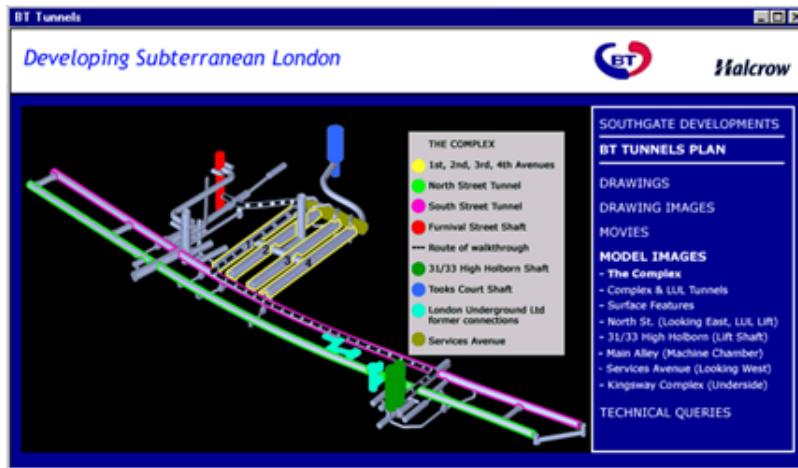
The project was turned around to meet a strict deadline.

The presentation was optimised to work on a variety of platforms.

INTRODUCTION



MODEL IMAGES



WALK THROUGH MOVIES

